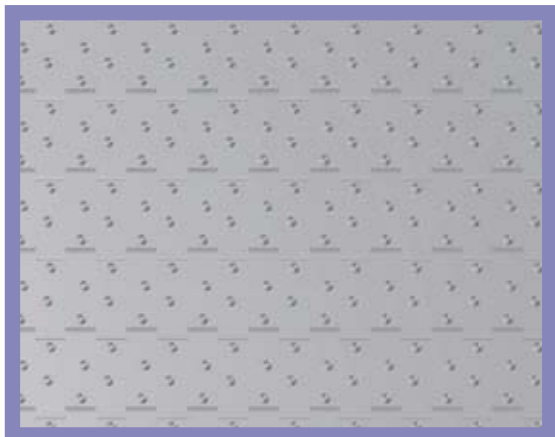


25-830



- Belt surface: Structure top with 3 mm cones.
- Open area: Closed.
- Strength: An ideal choice for light transportation.
- Material: PE, PP, POM.
- Accessories: 25 and 50 mm flights.
25 and 50 mm side guards.
Modules can be supplied with a moulded indent of 40 mm.
- Application: Seafood, red meat, vegetables etc.

HUB SPECIFICATION

	Number of teeth		
	6Z	12Z	20Z
Round bore (mm)	20ø	20ø 25ø 30ø 40ø	25ø 30ø 40ø
Square bore (mm)		40x40	40x40 60x60

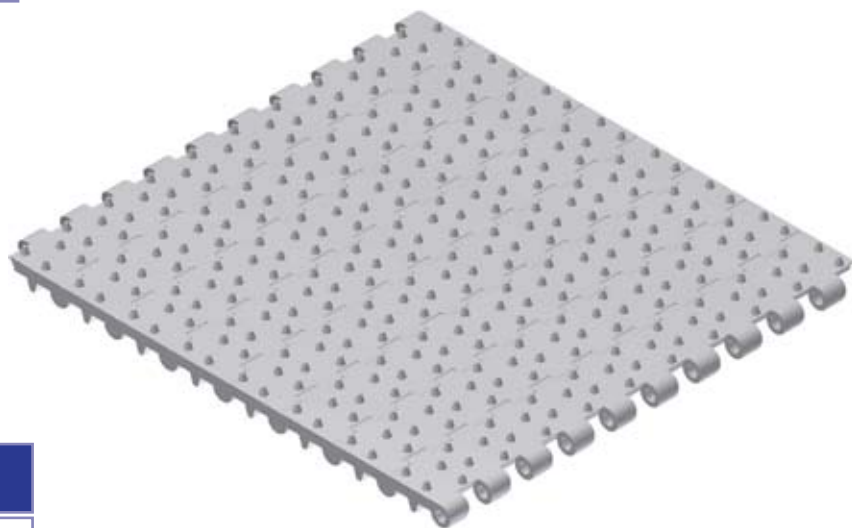
bore available in inch size

BELT DATA

Materials	Max. belt pull kg/m of width	Belt weight kg/m ²
Polyethylene (PE)	550	5.5
Polypropylene (PP)	650	5.5
Polyacetal (POM)	1050	8

SPROCKET DATA

No. of teeth Z	A=Outside diameter (mm)	B=Pitch diameter (mm)	C=Inside diameter (mm)	Sprocket width (mm)
6	59	50	41	20
12	106	97	88	38
20	170	161	152	38



EASY TO CLEAN

