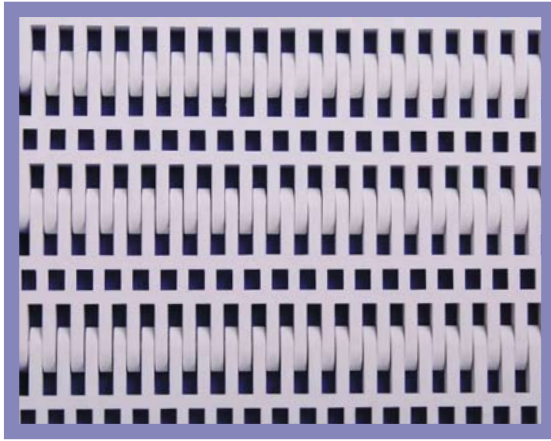


50-100

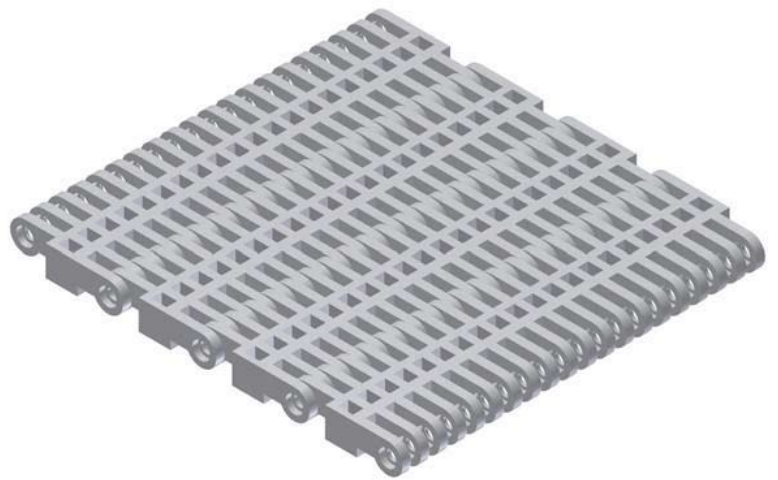


- ➔ Belt surface: Open belt with a smooth surface.
- ➔ Open area: 27%. Biggest opening 5 x 9 mm.
- ➔ Strength: The right belt for heavy applications.
- ➔ Material: PE, PP, POM.
- ➔ Accessories: 25, 50, 75 and 100 mm flights.
Extended and bent flights.
50, 75, 100 and 150 mm side guards.
Hold-down.
- ➔ Application: Seafood, wood, bakery, meat, vegetables, poultry and heavy duty transportation in general.

HUB SPECIFICATION

	Number of teeth			
	6Z	8Z	10Z	12Z
Round bore (mm)	25ø	25ø	30ø	30ø
	30ø	30ø	40ø	40ø
	40ø	40ø	50ø	50ø
Square bore (mm)	38.1x38.1	38.1x38.1	38.1x38.1	40x40
	40x40	40x40	40x40	60x60

bore available in inch size

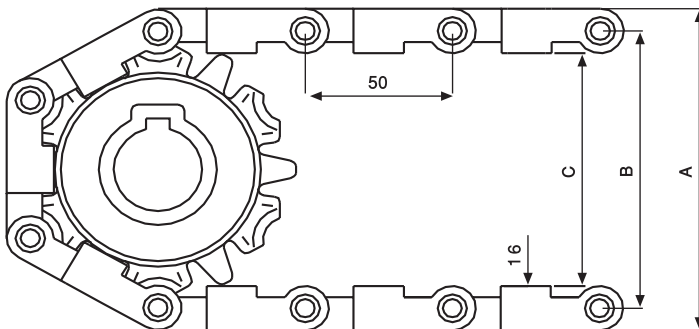


BELT DATA

Materials	Max. belt pull kg/m of width	Belt weight kg/m ²
Polyethylene (PE)	1840	8
Polypropylene (PP)	2795	8
Polyacetal (POM)	4200	12

SPROCKET DATA

No. of teeth Z	A=Outside diameter (mm)	B=Pitch diameter (mm)	C=Inside diameter (mm)	Sprocket width (mm)
6	117	101	85	30
8	149	133	117	36
10	180	164	148	39
12	211	195	179	39



Maine Industrial Plastics and Rubber Corporation

21 Teague Street - PO Box 381 - Newcastle, ME 04553

Phone: (207) 563-5532 Email: HGL@TIDEWATER.NET FAX: (207) 563-8457