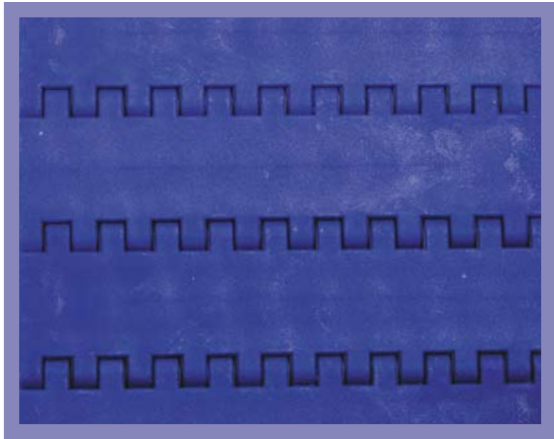


50-908

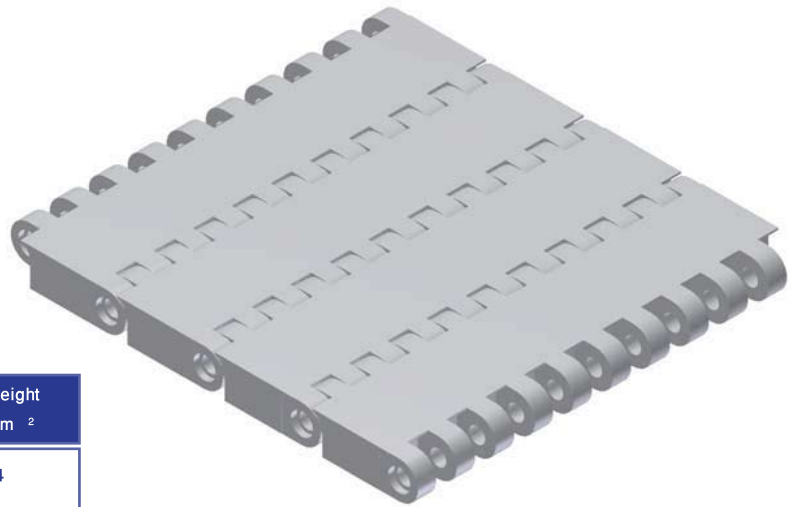


- ➔ Belt surface: Flat top.
- ➔ Open area: Closed
- ➔ Strength: The right belt for very-heavy applications.
- ➔ Material/colour: POM, PP.
- ➔ Accessories: 75 mm flight.
- ➔ Application: Very heavy transportation.
Assembling belt for cars.
Truck loading systems.
Pollets.

HUB SPECIFICATION

	Number of teeth 12Z
Square bore (mm)	40x40 60x60

bore available in inch size



BELT DATA

Materials	Max. belt pull kg/m of width	Belt weight kg/m ²
Polypropylene (PP)	6000	14
Polyacetal (POM)		17

SPROCKET DATA

No. of teeth Z	A=Outside diameter (mm)	B=Pitch diameter (mm)	C=Inside diameter (mm)	Sprocket width (mm)
12	210	191	172	38

