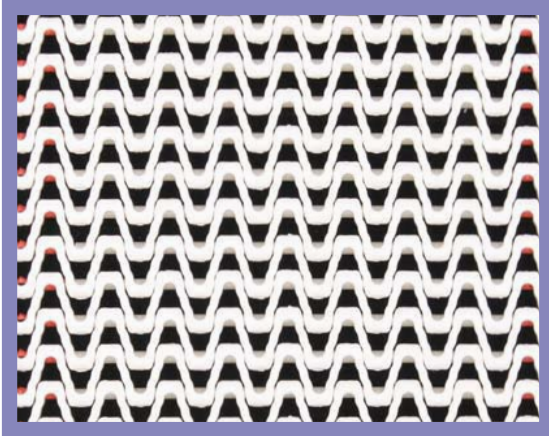
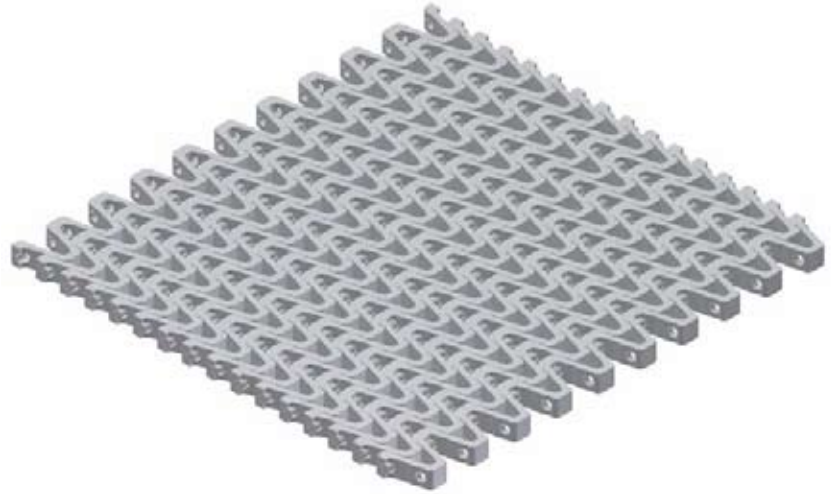


12-400



- ➔ Belt surface: Open belt with a smooth surface.
- ➔ Open area: 40% Biggest opening 6x8 mm.
- ➔ Strength: Ideal choice for light transportation.
- ➔ Material: PE, PP, POM.
- ➔ Application: Cooling belt for small nose bar/transfer.



HUB SPECIFICATION

| | Number of teeth | | | |
|------------------|-----------------|-------------------|----------------|-------------------|
| | 10Z | 19Z | 24Z | 28Z |
| Round bore (mm) | 20ø | 20ø 25ø 30ø | 20ø 25ø | 25ø 30ø 40ø |
| Square bore (mm) | | 25x25 40x40 | 25x25 40x40 | 25x25 40x40 |

BELT DATA

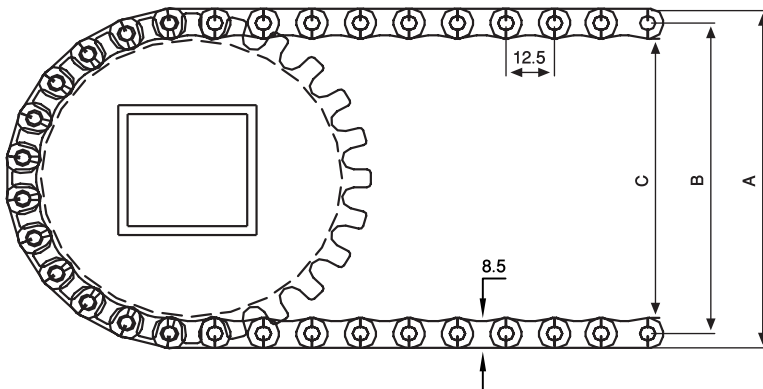
| Materials | Max. belt pull kg/m of width | Belt weight kg/m ² |
|--------------------|---------------------------------|----------------------------------|
| Polyethylene (PE) | 600 | 3.5 |
| Polypropylene (PP) | 800 | 3.5 |
| Polyacetal (POM) | 1450 | 4.8 |

SPROCKET DATA

| No. of teeth Z | A=Outside diameter (mm) | B=Pitch diameter (mm) | C=Inside diameter (mm) | Sprocket width (mm) |
|-------------------|----------------------------|--------------------------|---------------------------|------------------------|
| 10 | 50 | 42 | 33 | 8 |
| 19 | 84 | 76 | 67 | 12 |
| 24 | 104 | 96 | 87 | 12 |
| 28 | 120 | 112 | 103 | 12 |



1:1



Maine Industrial Plastics and Rubber Corporation

21 Teague Street - PO Box 381 - Newcastle, ME 04553

Phone: (207) 563-5532 Email: HGL@TIDEWATER.NET FAX: (207) 563-8457