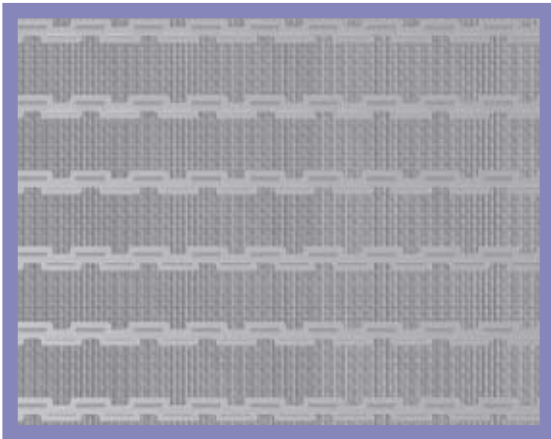


# 25-800F



- Belt surface: Closed belt with a 3mm friction surface.
- Open area: Closed.
- Strength: An ideal choice for light transportation.
- Material: PE, PP.
- Application: Transport of goods on a slightly inclined conveyor.



### HUB SPECIFICATION

	Number of teeth		
	6Z	12Z	20Z
Round bore (mm)	20ø	20ø 25ø 30ø 40ø	25ø 30ø 40ø
Square bore (mm)		40x40	40x40 60x60

bore available in inch size

### BELT DATA

Materials	Max. belt pull kg/m of width	Belt weight kg/m <sup>2</sup>
Polyethylene (PE)	550	5
Polypropylene (PP)	650	5

### SPROCKET DATA

No. of teeth Z	A=Outside diameter (mm)	B=Pitch diameter (mm)	C=Inside diameter (mm)	Sprocket width (mm)
6	59	50	41	20
12	106	97	88	38
20	170	161	152	38

