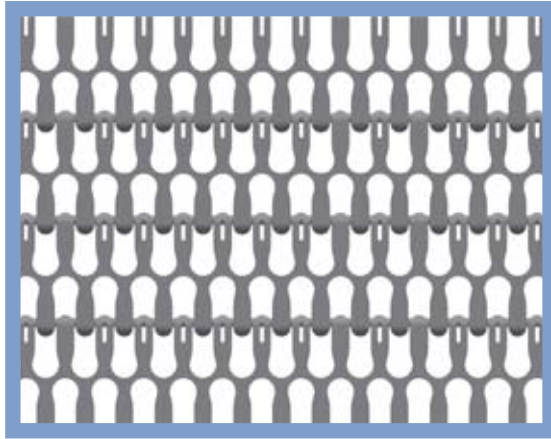


S-200



- ➔ Belt surface: Smooth.
- ➔ Open area: 47 %
- ➔ Strength: Ideal for heavy duty spirals and curves.
- ➔ Material: POM/PP
- ➔ Cleanability: Good.
- ➔ Application: Spiral coolers, radius conveyors

HUB SPECIFICATION

	Number of teeth
	10Z
Round bore (mm)	25ø
	30ø
	40ø
	50ø
	60ø
Square bore (mm)	25x25
	40x40
	60x60

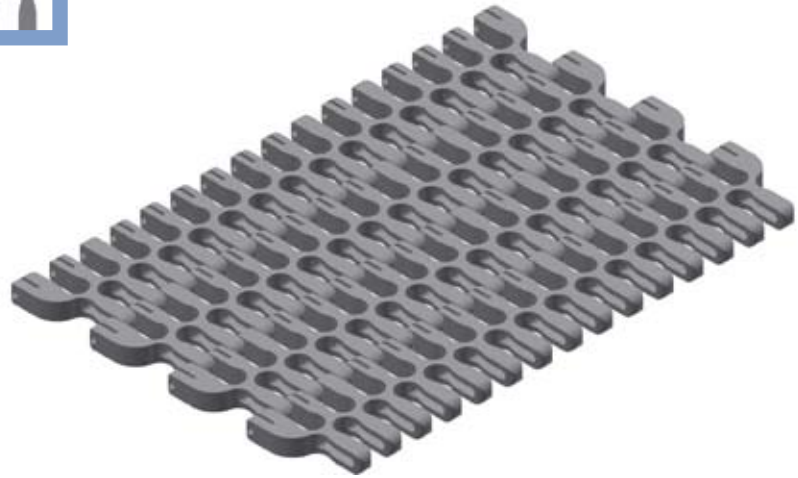
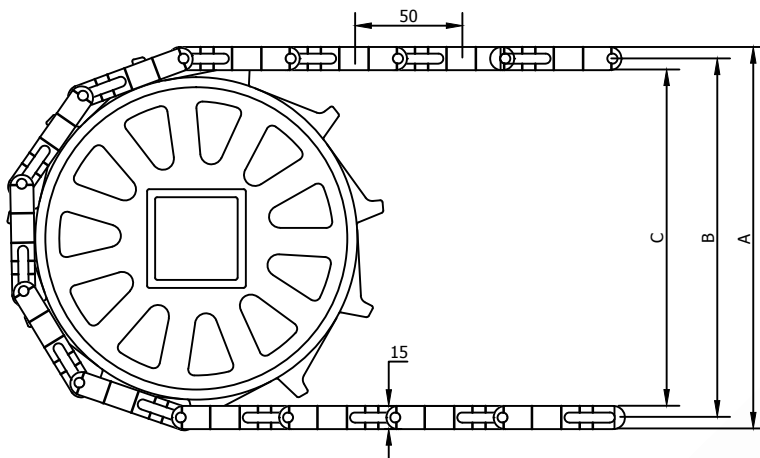
bore available in inch size

BELT DATA

Materials	Rods	Max. belt pull kg/m of width	Belt weight kg/m ²
Polyacetal (POM)	PP	205	8
	Nylon	305	8
Polypropylene (PP)	PP	160	6
	Nylon	250	6

SPROCKET DATA

No. of teeth Z	A=Outside diameter (mm)	B=Pitch diameter (mm)	C=Inside diameter (mm)	Sprocket width (mm)
10	169	154	139	35



1:1